

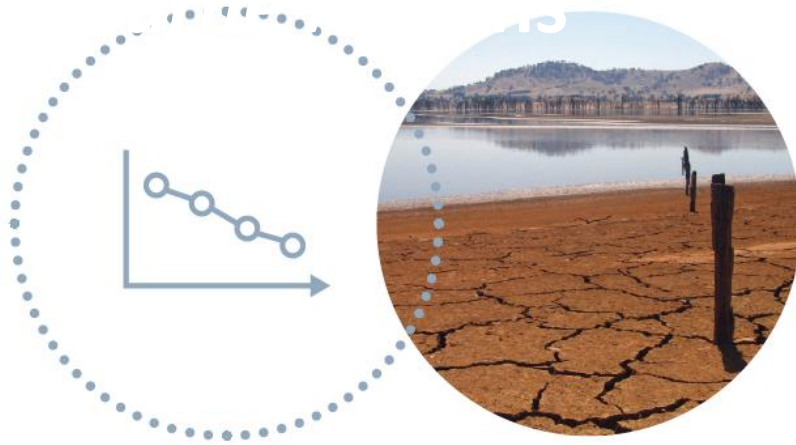
Living Melbourne

Our metropolitan urban forest



Martin Hartigan – Program Manager, Living Melbourne

Resilient Melbourne



CHRONIC STRESSES

Challenges that weaken the fabric of a city on a day-to-day or cyclical basis. Examples include sea level rise, increasing pressures on healthcare services, unemployment, and deeper social inequality.



ACUTE SHOCKS

Sudden events that threaten a city. In Melbourne, examples of acute shocks include heatwaves, bushfires, floods, influenza pandemics, and extremist acts, including cyber-crime.



Resilient Melbourne – A Metropolitan Opportunity

32 municipalities

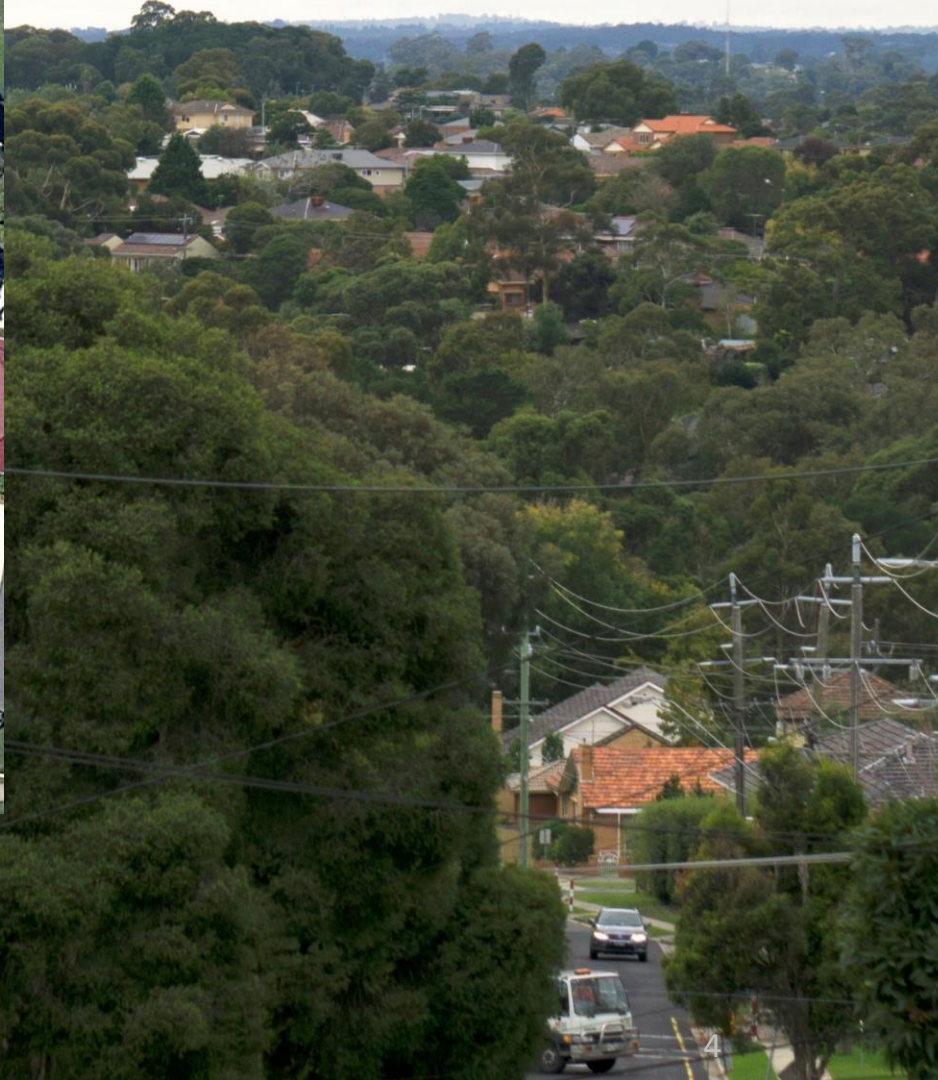
- Banyule City Council
- Bayside City Council
- Boroondara City Council
- Brimbank City Council
- Cardinia Shire Council
- City of Casey
- City of Darebin
- Frankston City
- City of Glen Eira
- Greater Dandenong
- Hobsons Bay City Council
- Hume City Council
- City of Kingston
- Knox City Council
- Manningham City Council
- Maribyrnong City Council
- Maroondah City Council
- City of Melbourne
- City of Melton
- Mitchell Shire Council
- City of Monash
- City of Moonee Valley
- Moreland City Council
- Mornington Peninsula Shire
- Nillumbik Shire Council
- City of Port Phillip
- City of Stonnington
- City of Whitehorse
- City of Whittlesea
- Wyndham City Council
- City of Yarra
- Yarra Ranges Council

City of
Melbourne

Urban densification



2010



Urban densification



2010



2018

Why is Melbourne's urban forest important?



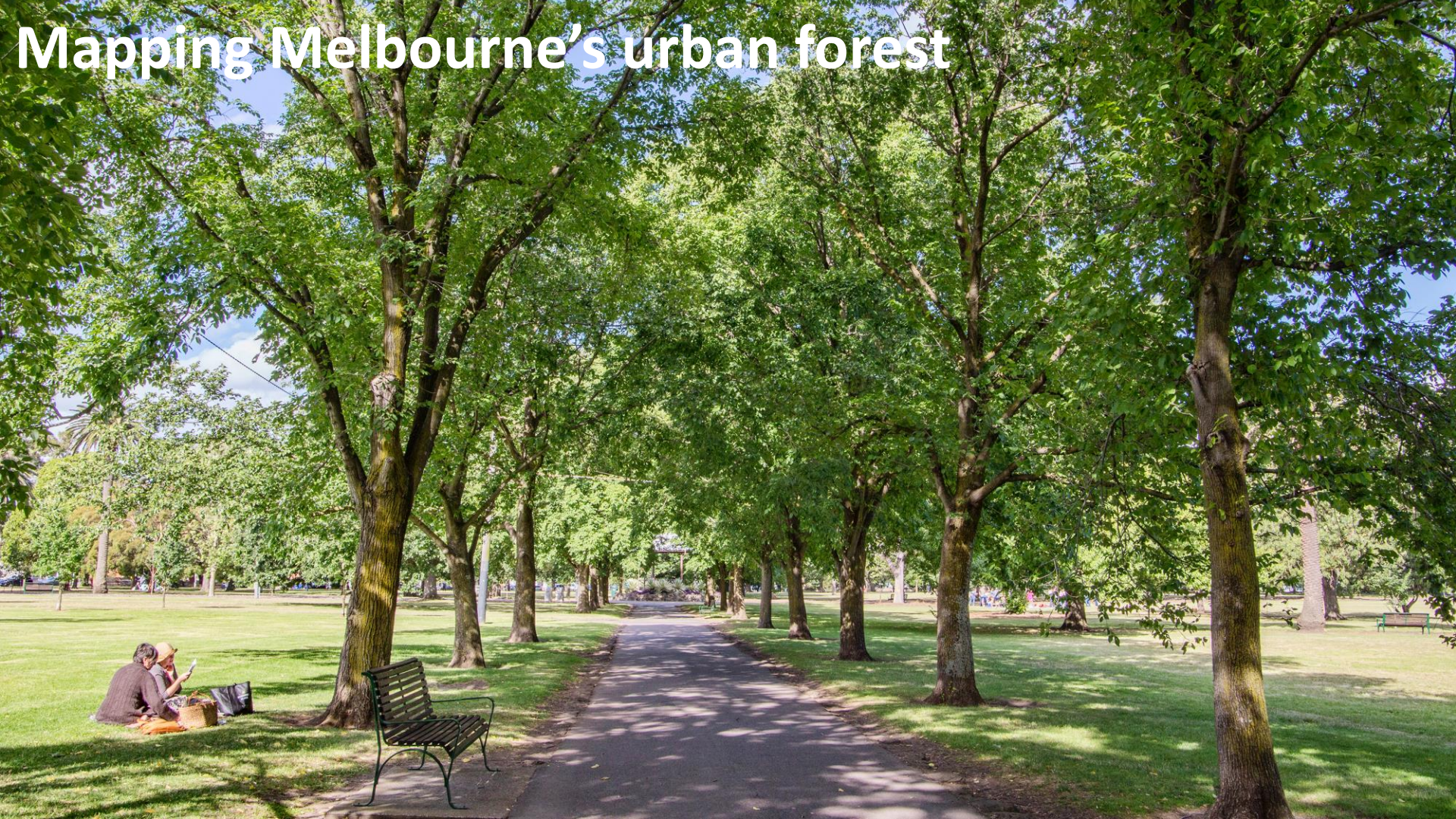
Living Melbourne



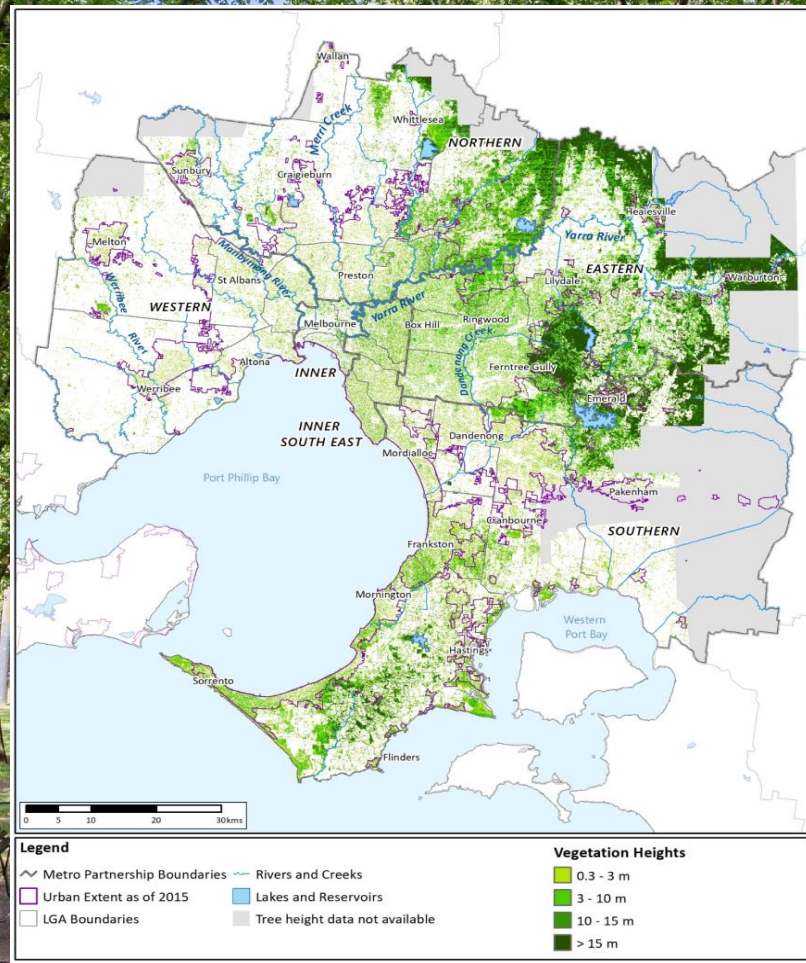
Literature Review and Technical Analysis

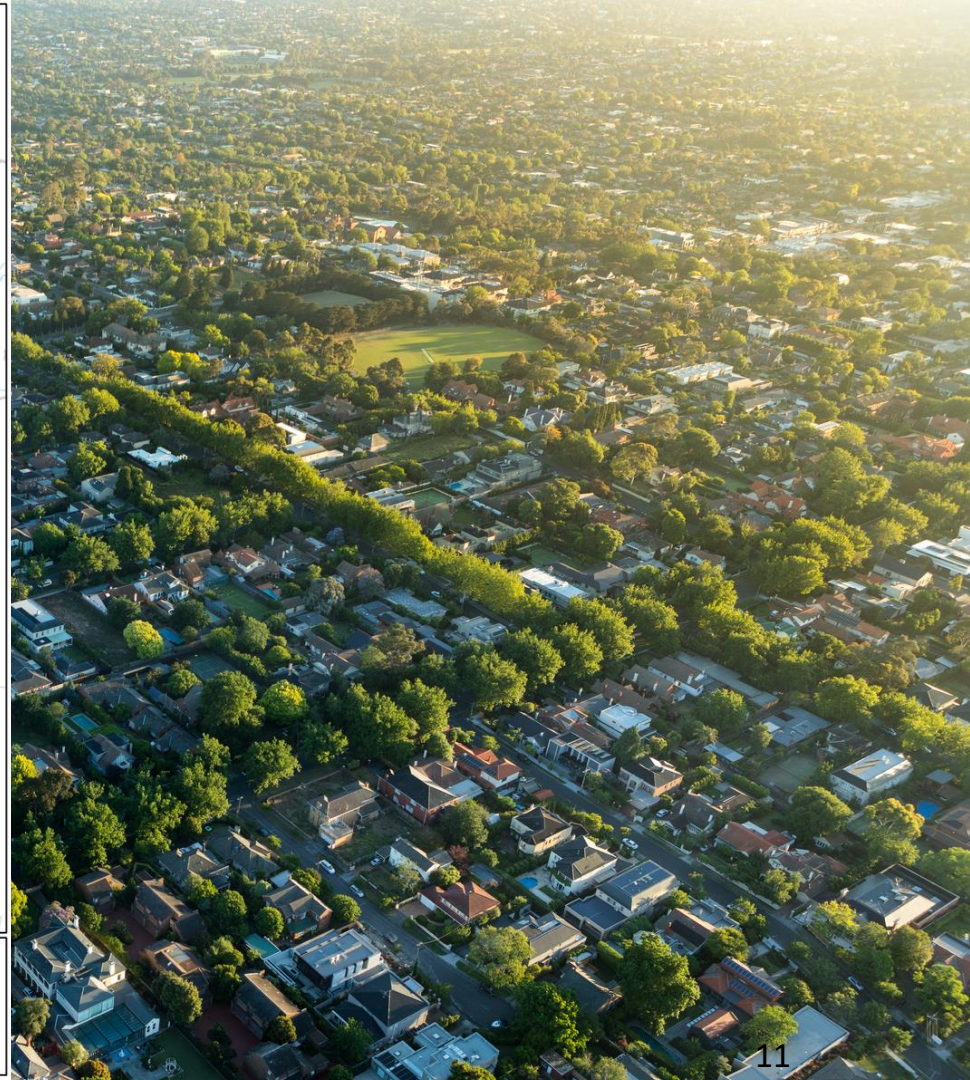
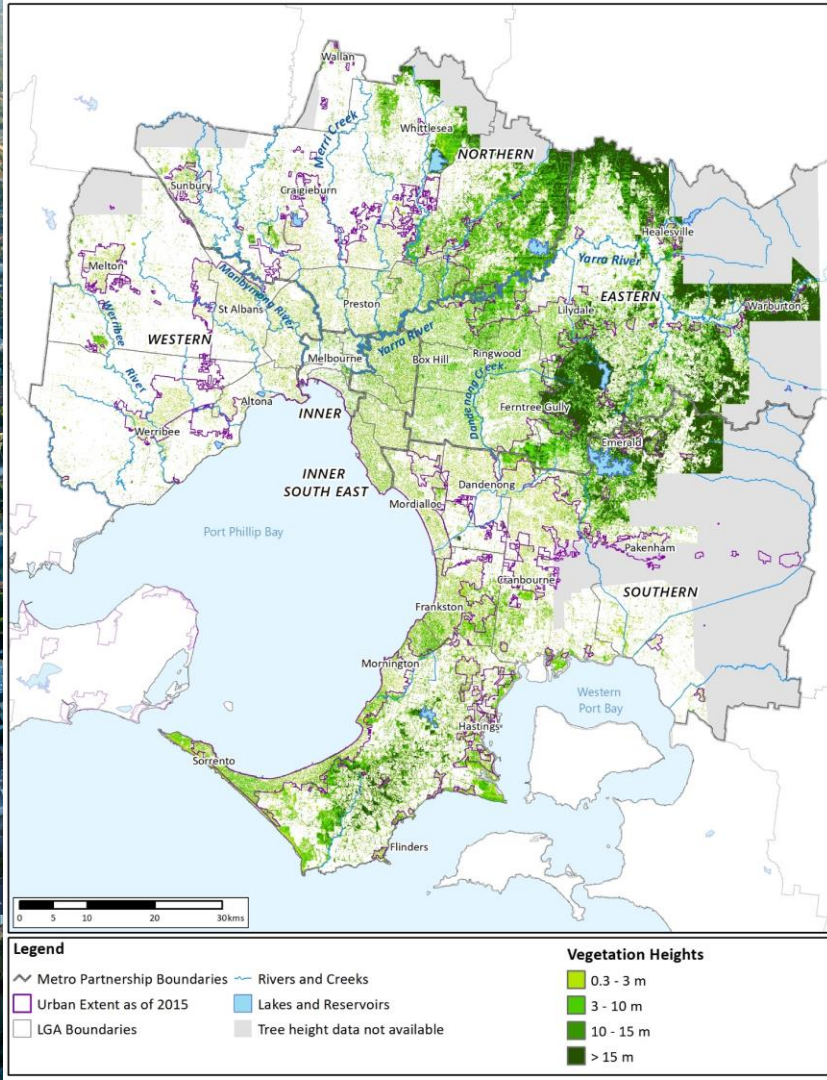


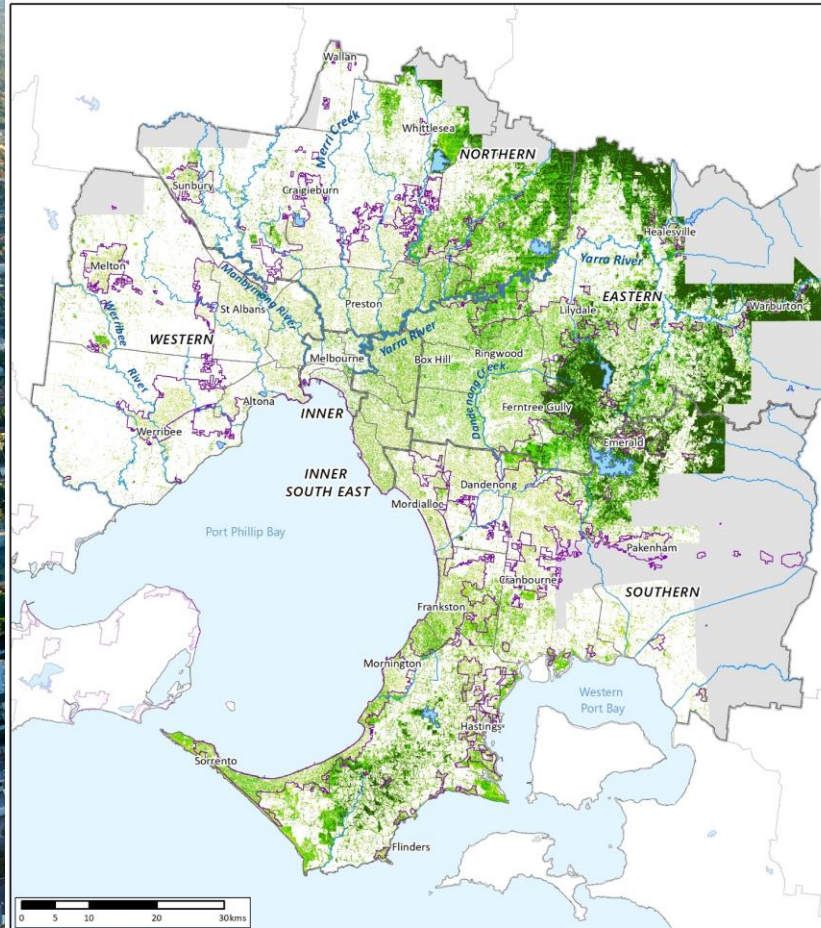
Mapping Melbourne's urban forest



Mapping Melbourne's urban forest





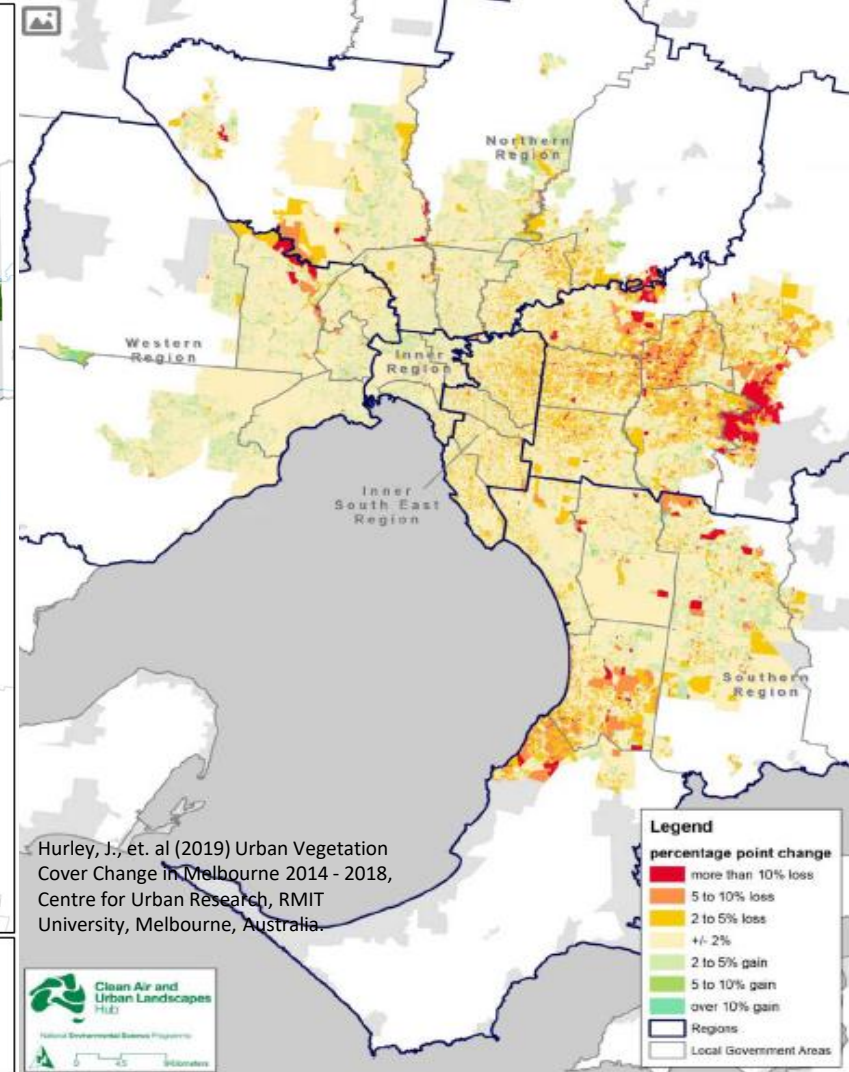


Legend

- ~ Metro Partnership Boundaries
- ~ Rivers and Creeks
- Urban Extent as of 2015
- Lakes and Reservoirs
- LGA Boundaries
- Tree height data not available

Vegetation Heights

- 0.3 - 3 m
- 3 - 10 m
- 10 - 15 m
- > 15 m



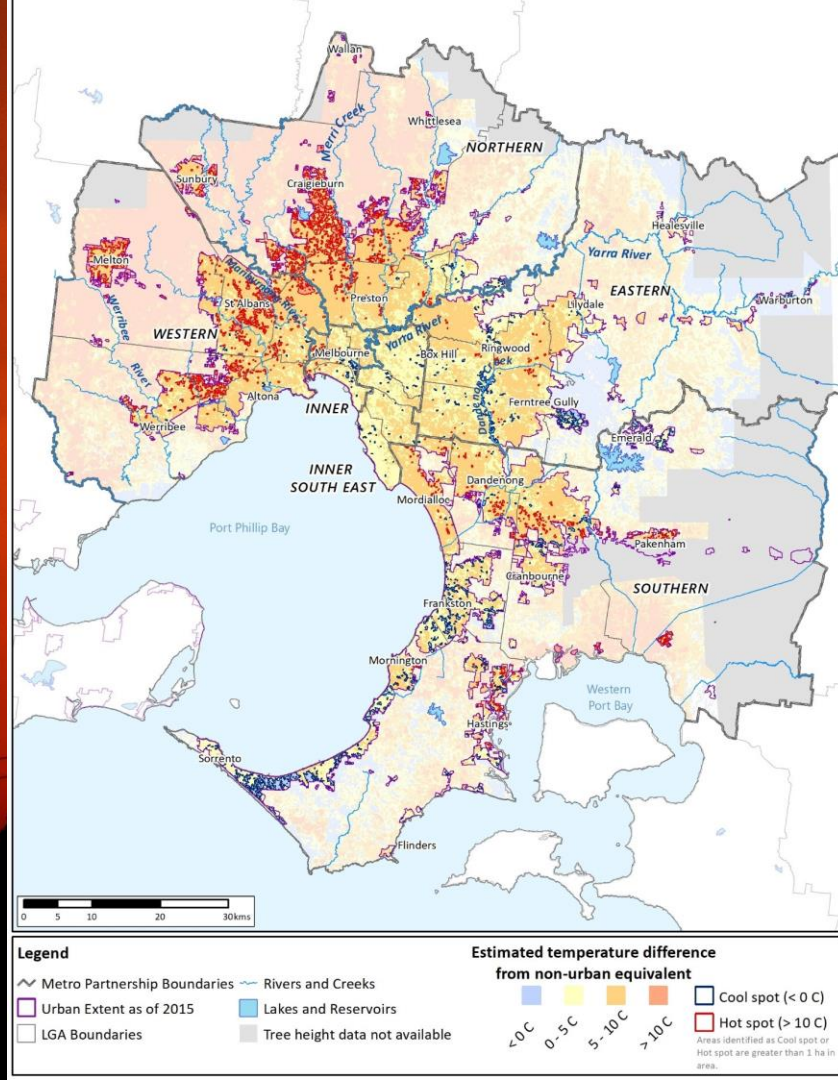
Hurley, J., et. al (2019) Urban Vegetation Cover Change in Melbourne 2014 - 2018, Centre for Urban Research, RMIT University, Melbourne, Australia.



Mapping heat



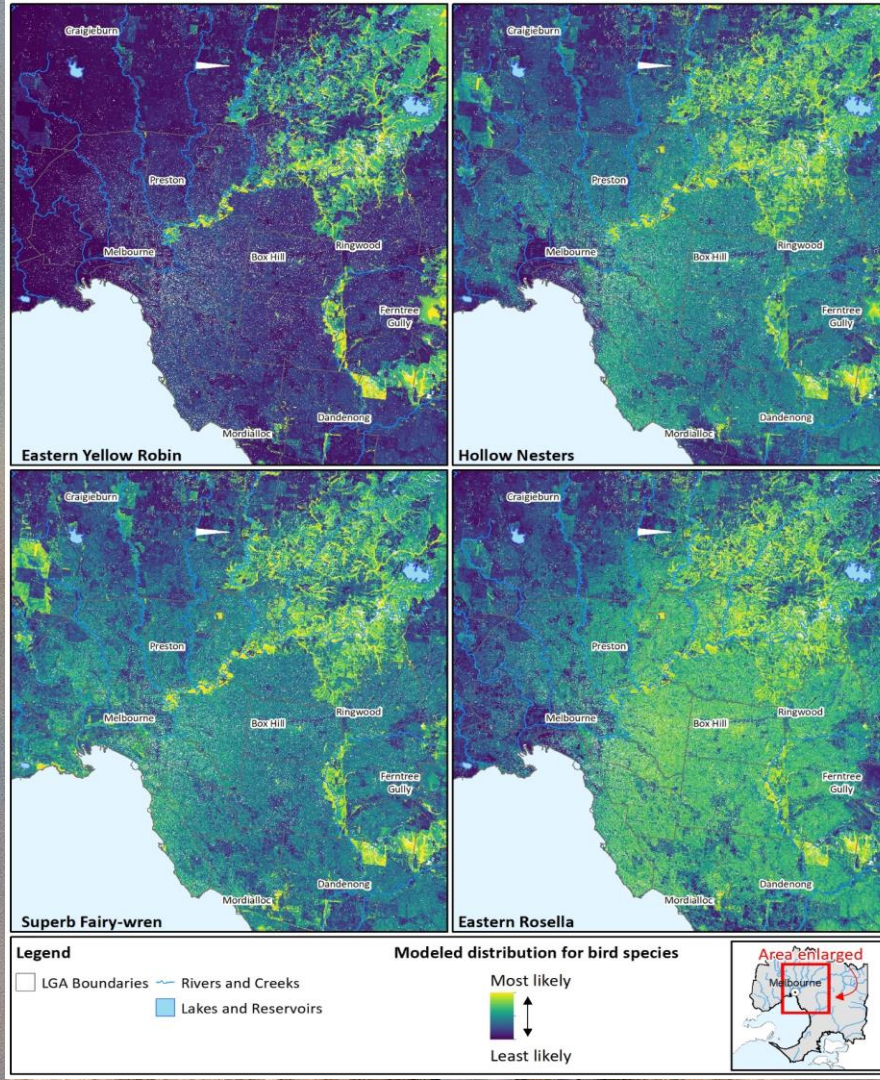
Mapping heat



Biodiversity modelling



Biodiversity modelling



A template for success



Bosco Verticale, Milan
Italy

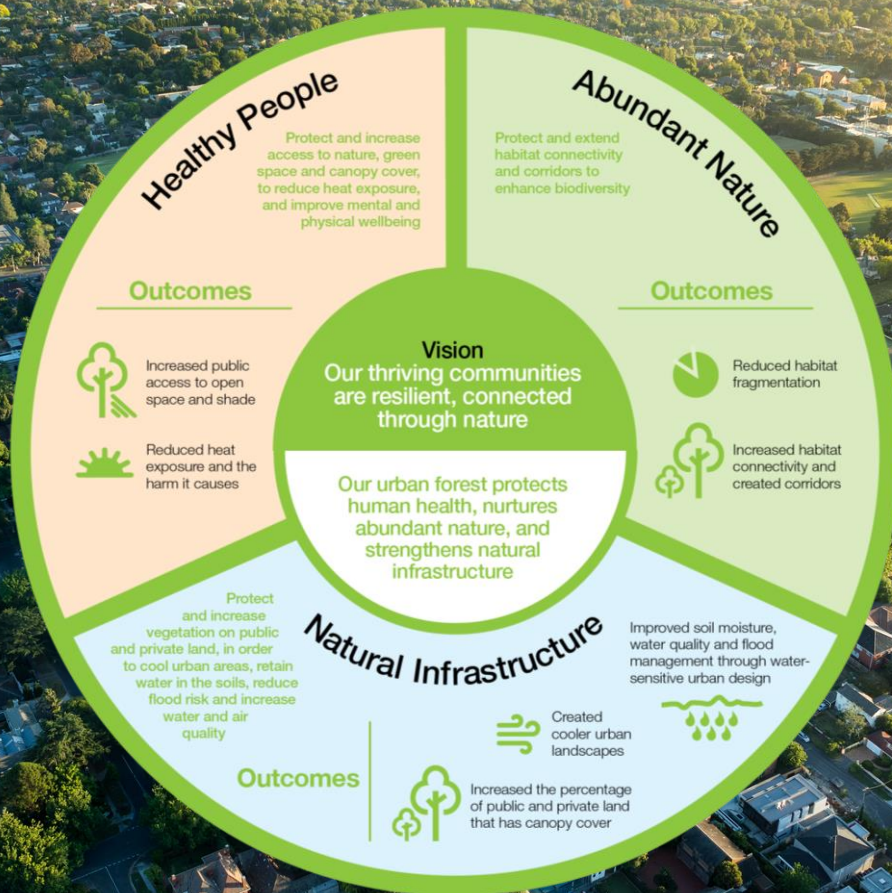
Image: Linda S. Velazquez
Copyright 1999-2018 Greenroofs.com.
All rights reserved.



Consultation and co-design



Consultation and co-design



Living Melbourne Actions

Action 1



Protect and restore
species habitat, and
improve connectivity

Action 2



Set targets and
track progress

Action 3



Scale up greening
in the private realm

Action 4



Collaborate across
sectors and regions

Action 5



Build a toolkit of
resources to underpin
implementation

Action 6



Fund the protection
and enhancement of
the urban forest

Endorsement



Environment,
Land, Water
and Planning



Healthy Parks
Healthy People®





Launch

Implementation





Living Melbourne

**Our metropolitan
urban forest**



MELBOURNE



Thank you!